

Safeguarding Bundaberg's water supply



Fox Resources is committed to safeguarding the Bundaberg district's local water supply. Here are some key facts on our project impacts (read more about our project on the back page):

Protecting local water sources

- ❏ Water for operations will come exclusively from the **Burrum Coal Measures Aquifer**, which is brackish and unsuitable for drinking or agriculture.
- ❏ The **Elliott Formation Aquifer**, used for local drinking and agricultural water, will not be impacted.
- ❏ Refer Figure 1 (below) for a geological explanation of the **distinct separation between these aquifers**.

Minimising impacts

- ❏ **Grouting:** Drill holes are fully sealed to prevent water transfer between layers, exceeding regulatory standards.
- ❏ **Exploration drilling:** Small-diameter boreholes (similar to a farmer's water bore) are rehabilitated immediately upon completion of drilling.
- ❏ **Mining method:** Bord-and-pillar mining method (as used by the Romans and mandated by Qld Govt) prevents any subsidence.

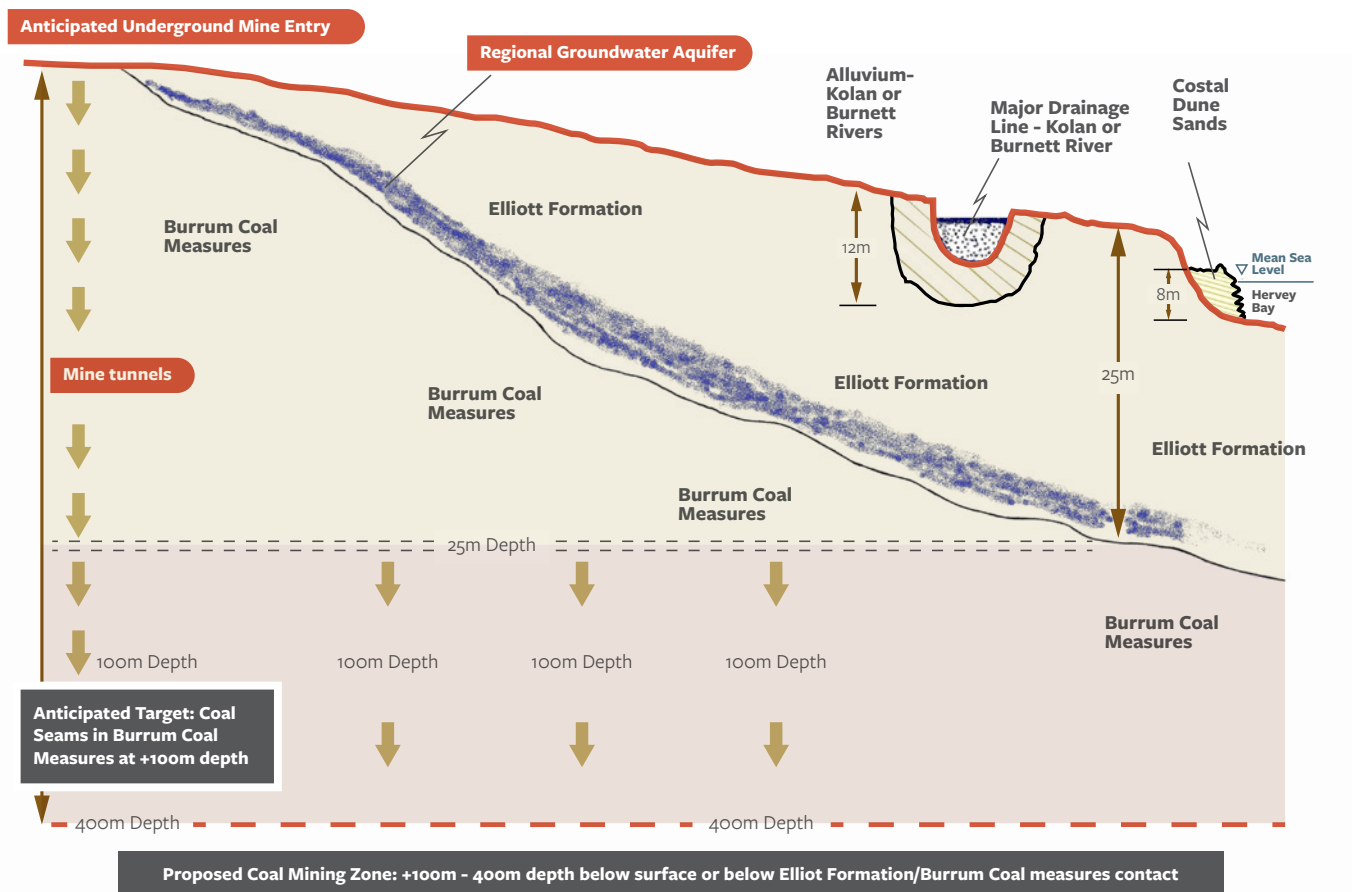


Figure 1: Diagram shows the separation of the Burrum Coal Measures Aquifer and the Elliott Formation Aquifer, with Fox Resources' anticipated entry point completely avoiding the Elliott Formation.



FAQs

❏ Will agricultural water be impacted?

No. Fox Resources will only use water from the Burrum Coal Measures, which is brackish and unsuitable for drinking or farming. The Elliott Formation Aquifer remains untouched and fully protected.

❏ What are the Burrum Coal Measures?

A geological layer up to 400 metres below the surface, containing brackish water. It is isolated from the Elliott Formation by impermeable clay and shale

❏ Will mining affect drinking water?

No, only brackish, undrinkable water from the Burrum Coal Measures will be used.

❏ What about the Burnett and Kolan Rivers?

No impact. Fox Resources will not divert, impede, or use water from the Burnett or Kolan Rivers. The targeted aquifer is entirely underground and separate from the river systems.

❏ How is contamination prevented?

Grouted drill holes and natural barriers ensure no inter-formational water transfer. Grouting will also benefit the area by filling in naturally occurring cracks.

❏ Will agricultural land be disturbed?

No. Fox's future infrastructure, such as the pit head, will be placed on non-arable land, avoiding Bundaberg's valuable agricultural soils.

❏ Will Fox Resources' activities affect the quality of cane farms in the Bundaberg region?

No, Fox's underground mining activities are located 100 to 400m below the surface in the Burrum Coal Measures. The shallower Elliott Formation, which supports agriculture, is separated by impermeable clay and shale layers, ensuring no connectivity or impact on farming land or water.

About Fox Resources

Fox Resources is an Australian exploration company currently advancing the development of an underground, steel-making coal mine in north-west Bundaberg, Queensland. The project is currently at an exploration stage, with Fox Resources committed to pursuing a project that puts priority on local employment and businesses while sustainably co-existing with agriculture, other land uses and the environment.

Under Fox Resources' Mineral Development Licence (MDL) 3040 application, the company is seeking to drill five bore holes for exploration purposes and conduct some technical studies in accordance with Queensland Government regulations. An MDL is NOT a mine, as stated by the Qld Resources Department: "The MDL allows you to conduct geoscientific programs (e.g. drilling, seismic surveys), mining feasibility studies, metallurgical testing and marketing, and environmental, engineering and design studies."

Any proposal for a mine would require a separate, comprehensive environmental impact statement process with assessment by both Queensland and Australian Governments.

Fox Resources is committed to working closely with the Wide Bay Area community in advancing its proposed resources development in Bundaberg and the Wide Bay Area. This includes maintaining an open and consultative approach towards all key stakeholders, including the local community, First Nations, government and all relevant parties, as shown by the establishment of the Bundaberg Regional Reference Group.

For more information, please visit www.foxresources.com.au

